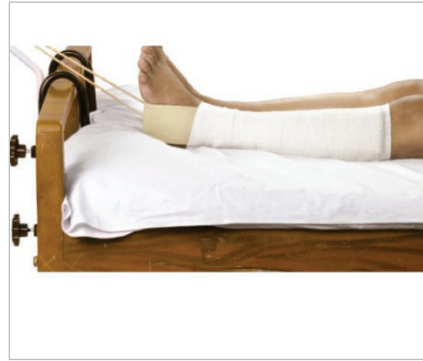




كير ميديكال تریدينغ ذ.م.م.  
CARE MEDICAL TRADING W.L.L



# EMERGENCY AND FIRST AID

## AMBULANCE STRETCHERS

### SPECIFICATIONS

Ambulance Multifunctional Stretcher

1. Aluminum Alloy
2. Completely automatic
3. Load Bearing: 250kgs



## SCOOP STRETCHER



## EMERGENCY STRETCHER



## BASKET STRETCHER

STRETCHER-BASKET STRETCHER-TD+8  
STRECTURE-FOLDING STRECTURE (TD010151)  
STRECTURE-SCOOP STRECTURE (MLF999-E) (TD01016)  
STRECTURE-FOLDING STRECTURE (TD01015) 2 FOLD  
STRECTURE-SOFT STRECTURE (TD01080)  
STRECTURE-FOLDING STRECTURE 4 FOLD  
STRECTURE-AUTOMATIC WHEEL CHAIR TYPE (TD010132)  
STRETCHER -MULTIPURPOSE # 31206  
STRECTURE-MULTIFUNCTIONAMBULANCEAUTOSTRECTURE (TD010131)



## BROSELOW HINKLE PEDIATRIC RESUSCITATION SYSTEM



## AMBULANCE STRETCHERS

AE-4800 Broselow™ Pediatric Emergency Tape, 5/pkg. **VERSION 2007A**



### SPECIFICATIONS

**Measure:** Measure the child with Broselow® tape. This gives you an accurate weight estimate, equipment sizes, and drug dosages.

**Treat:** Reach in the bag for exactly the right equipment for I.V., intubation, O<sub>2</sub> delivery, or intraosseous access. There's no guessing.

## BURN SHEET STERIEL



STERILE BURN SHEET DISP. 60X96

## CPR MASK WITH O2 INLET



## EMERGENCY BLANKET

### SPECIFICATIONS

Approximately the size of a band-aid box when folded, the Dyna Med® Emergency Blanket can be taken anywhere, anytime. This aluminum polymer blanket is designed to retain body heat for shock victims while blocking cold, wind and moisture. Can also be used as an emergency stretcher and will support more than 250 pounds if not punctured. Unfolded, measures 54" x 84". Weighs 2 oz.





## CPR MICROMASK

### SPECIFICATIONS

- One-way, non-rebreathing valve
- 3M Filtrete Two-Way Filter - helps to protect both patient and rescuer
- Large valve opening for maximum ventilation volume with minimal effort
- Latex-free, soft, blue nitrile gloves included
- Can be utilized with bag mask resuscitators
- Soft mask conforms to various facial features and provides an excellent seal
- Suitable for adults, children, or infants
- Customized versions available - add your groups name, logo, or slogan (minimum order of 300)
- Adjustable cuff inflation for even better facial conformity



## EMERGENCY SHOWER



## EMERGENCY VESTS

### SPECIFICATIONS

- 5 point breakaway system guarantees vest can easily be removed if caught in car door or during confrontations
- Zipper front can also be ripped away and provides quick on or off capabilities
- Silver die cut reflective chevrons on back are a first for traffic vests
- Side access cutouts ensure rapid availability to weapon
- Orange and lime green color combination creates an ANSI Class 2 vest with better visibility
- Attached mic and pen holder



## HAND-HELD PULSE OXIMETER



## HEAD IMMOBILIZER



HEAD IMMOBILIZER ADULT -GALLS IE015  
HEAD IMMOBILIZER ADULT (TD+1)



## SPINE BOARD

### SPECIFICATIONS

SPINAL BOARD CHILD 8-ARMSTRONG AE640-SB8  
 SPINAL BOARD SB-1, ORANGE  
 SPINAL BOARD SB-3, ORANGE-dont enter  
 SPINAL BOARD YELLOW SB026  
 SPINAL BOARD SB-5, ORANGE  
 SPINAL BOARD SB-5A, ORANGE  
 SPINAL BOARD 3, ORANGE-SB3  
 SPINAL BOARD SB026 YELLOW (DYNAMED)  
 SPINAL BOARD 1, ORANGE  
 SPINAL BOARD SB-7  
 SPINAL BOARD CHILD 8 ORANGE SB-8  
 SPINAL BOARD 5, ORANGE-SB5



## K.E.D. EXTRICATION DEVICE

### SPECIFICATIONS

K.E.D. has horizontal flexibility for ease of application in cramped areas, and vertical rigidity for spinal stability and safety. It is an invaluable product for any emergency team.

Rapid application in tight spots  
 Firm support for the victim's head, neck, and spine

Further assistance can be given to the victim while the K.E.D. remains in place:  
 CPR can be easily performed  
 MAST trousers can be applied without interference  
 Traction splint can be applied  
 Will not interfere with x-rays



## HYDRO SERIES DELUXE BLS KIT

### SPECIFICATIONS

Hydro Series bags offer great versatile style and features along with durable high performance waterproof finish.  
 Waterproof, durable, 1000 denier, PVC tarpaulin finish  
 Internal adjustable divider system  
 Heavy duty rubber feet to protect bottom of the bag  
 Shoulder strap and heavy duty handle  
 Front and side pockets  
 11"H x 22"W x 14"D



## HYDRO SERIES ALS KIT

### SPECIFICATIONS

Hydro Series bags offer great versatile style and features along with durable high performance waterproof finish.  
Waterproof, durable, 1000 denier, PVC tarpaulin finish  
Internal adjustable divider system  
Heavy duty rubber feet to protect bottom of the bag  
Shoulder strap and heavy duty handle  
Front and side pockets  
O2 compartment with protective sleeve  
12"H x 24"W x 15"D



## MAXI-MEDIC BAG WITH WATERPROOF BOTTOM

### SPECIFICATIONS

This medium-sized bag provides plenty of room for Basic Life Support (BLS) Equipment for management of airways, burns, and skin traumas in addition to standard supplies. With it's waterproof bottom you can set this bag virtually anywhere - snow, puddles or mud - and be confident that your equipment will be dry when you need it. Customizable interior compartments allow you to adjust the storage to fit your needs.

1000 denier nylon  
11 adjustable interior compartments to organize your supplies  
2 zippered outside compartments for storage of bulkier items  
Mesh pouch on lid for smaller items  
Reflective striping and Star of Life for added visibility  
Waterproof bottom  
Shoulder strap  
9"H x 20"W x 12"D  
Imported



## DIAGNOSTIC LAMP

### SPECIFICATIONS

LED lamp for bright, white illumination  
Durable CNC machined brass housing in a striking black matte finish  
Positive feel power switch  
Uses 2 AAA batteries (included)  
5-5/8" long, 1/2" diamete



## LEG TRACTION



## OBSTETRICAL KIT



## VACUUM SPLINT



Immobilizes injured areas without any external pressure  
Eliminates the need for tape, boards, or gauze

## TRACTION SPLINT



TRACTION SPLINT TS-2 FARETEC ,USA  
TRACTION SPLINT CHILD  
TRACTION SPLINT-ADULT  
TRACTION SPLINT ADULT-GALLS

## PROSPLINTS COMPLETE ADULT SPLINT KIT

### SPECIFICATIONS

The AE-1800 includes wrist/forearm splint, full arm splints (small and large), full leg splints (small and large), universal combo splint, universal rib splint, hard e-collars (small and medium), and carrying case.

Quick application and removal  
X-ray translucent/MRI compatible  
Wipes clean for reuse  
Folds for compact storage





## MANIKINS

### CPR KYLE THREE-YEAR-OLD CHILD MANIKIN

#### SPECIFICATIONS

Disposable non-rebreathing airway system that ensures sanitation, protecting students from the risk of cross infection.  
Personal-use face pieces for each student that can be discarded at session's end, or easily sanitized and reused. They are simple to insert and use.  
True-to-life anatomical landmarks aid skill acquisition  
Lightweight, rugged, foam-filled body



### CPR KEVIN INFANT MANIKIN

#### SPECIFICATIONS

Disposable non-rebreathing airway system that ensures sanitation, protecting students from the risk of cross infection.  
Personal-use face pieces for each student that can be discarded at session's end, or easily sanitized and reused. They are simple to insert and use.  
True-to-life anatomical landmarks aid skill acquisition.  
A lightweight, rugged, foam-filled body.



### CPR KIM NEWBORN MANIKIN

#### SPECIFICATIONS

Disposable non-rebreathing airway system that ensures sanitation, protecting students from the risk of cross infection.  
Personal-use face pieces for each student that can be discarded at session's end, or easily sanitized and reused. They are simple to insert and use.  
True-to-life anatomical landmarks aid skill acquisition.  
A lightweight, rugged, foam-filled body.



## PREMIE™ BLUE WITH SMARTSKIN™ PREMATURE SIMULATOR

### SPECIFICATIONS

PREMIE Blue depicts a 28-week premature infant and includes an injection arm as well as an intraosseous leg. Students can intubate as well as perform BVM and CPR. PREMIE Blue changes colors based on a pre-selected condition and measures the effectiveness of airway ventilation and chest compressions. PREMIE Blue closely mirrors those admitted to neonatal intensive care and provides added realism to training.

Realistic airway with tongue, vocal cords, trachea, and esophagus for airway management exercises

Heart, lungs, airway, and ribs

Simulate "heelstick" maneuver for capillary blood sample

BVM or CPR exercises

Intubation plus suction

Bilateral lung expansion with realistic chest rise

View peripheral or central cyanosis as well as healthy skin tone

Use monitor to select rates of improvement and deterioration

Watch skin color change in response to the effects of your student

Pulse umbilicus using pulse bulb

Practice placement of umbilical lines

Simulate CPR with either the two-thumb encircling method or two-finger alternate compression method

Practice intraosseous access

Practice injection or intravenous techniques



## PEDI® BLUE NEONATAL SIMULATOR · WITH SMARTSKIN™

### SPECIFICATIONS

The instructor can present the neonate as healthy, with peripheral cyanosis, or with central cyanosis. PEDI Blue has the ability to change color based upon a preselected condition, and the effectiveness of airway ventilation and chest compressions. The effectiveness of the treatment determines the change in skin color (blue color for poor treatment, healthy color for proper treatment).

Realistic airway with tongue, vocal cords, trachea, and esophagus

Heart, lungs, ribs, stomach, and liver

BVM or CPR

Oral or nasal intubation plus suctioning

Cricoid prominence for Sellick maneuver

Bilateral lung expansion with realistic chest rise

Patent umbilical vein



## LITTLE JOE JR.

### SPECIFICATIONS

Approximately seven years old, Little Joe Jr.'s realistic appearance and accurate anatomical landmarks make him an invaluable learning tool. Little Joe Jr. also features realistic head tilt and chin lift, easily manipulated airway, and non-rebreathing valve. All these characteristics combine to make Little Joe Jr. completely functional, durable, and easy to use.



## LITTLE JOE

### SPECIFICATIONS

Extremely sanitary. Prevents cross contamination with an individual face piece for each student and disposable, non-rebreathing airway.

Lifelike features. Head tilt/chin lift mobility. Plus, all essential landmarks, including navel for obstructed airway practice. Longer torso for abdominal thrusts. Realistic rib cage overlay for landmarking.

Quick clean up. After class, the inexpensive face pieces can be discarded, or sanitized and reused. Airways are disposable.

Durable and portable. Built to withstand high-volume usage. Easy to transport.



## ACTFAST™ ANTI CHOKING TRAINER

### SPECIFICATIONS

The training vest can be used in a variety of positions to create realistic scenarios, including standing, sitting, and laying on the ground. Also, it allows the student to practice self rescue using a countertop or chair.

Transparent PVC airway allows user to see release of obstruction.

Large easy snap buckles with adjustable straps. One size fits all.

Back Pad (red only) crumple zone for practicing back blows.

Navel aids in correct hand placement.





## PATIENT EDUCATION TRACHEOSTOMY CARE MANIKINS

### SPECIFICATIONS

The Patient Education Tracheostomy Care Manikins are ideal for teaching patients and caregivers the skills they will need to perform at home. The Adult Manikin includes oral and nasal passages, the pharynx, epiglottis, trachea, esophagus, tracheostomy site, and cricoid cartilage. Students can practice suctioning techniques, cuff inflation, dressing changes, and other techniques. The Infant Manikin can be used to teach parents and caregivers basic tracheostomy care skills.



## ADVANCED GRANDMA CHASE

### SPECIFICATIONS

Advanced Grandma Chase is the most comprehensive patient care manikin available. Designed specifically for nurse training programs, this lifelike, durable manikin allows high-quality practice and instruction. Advanced Grandma Chase offers all the realism of the Basic Grandma Chase Manikin except tracheostomy, plus the added features below:

- Carotid pulse
- Full-functioning airway with tongue, epiglottis, esophagus, and trachea with vocal cords
- Right and left bronchus for assessing intubation skills
- Articulating jaw
- Chest compresses for CPR
- Intramuscular injection sites at the deltoids, right gluteal muscle, and at the thighs
- I.V. practice capability on the right forearm and dorsal side of right hand
- Interchangeable male/female genitalia with full-functioning catheterization - voids fluids
- Enema capability
- Stomach reservoir
- Lightweight and portable with detachable arms and legs



## KERI NURSING MANIKINS

### SPECIFICATIONS

Includes most of the features of the Complete Keri Manikin, except internal fluid reservoirs, ostomy care, enema administration, oral and nasal lavage, gavage, and suctioning.



## NOELLE™ BIRTHING AND MATERNAL SIMULATOR

### SPECIFICATIONS

This comprehensive teaching system combines the features of a patient care manikin and an advanced childbirth simulator. It is designed to provide a complete birthing experience before, during, and after delivery.

The NOELLE Birthing and Maternal Simulator includes one articulating birthing baby with placenta, one resuscitation baby with intubation airway and umbilical catheter site, four umbilical cords, four dilating cervixes, two umbilical clamps, three vulva for postpartum suturing, talcum powder and lubricant, instruction manual, and carrying case.



Life-size, articulating, full-body female  
Intubation airway with chest rise  
I.V. arm for meds and fluids  
Removable stomach cover

Practice Leopold Maneuver  
Multiple fetal heart sounds  
Automatic birthing system  
Multiple placenta locations

Measure head descent and cervical dilation  
Replaceable dilating cervixes  
Practice postpartum sutures on vulval inserts

## GRANDMA CHASE PATIENT CARE MANIKIN

### SPECIFICATIONS

Includes sweat suit and interchangeable genitalia in carrying case.

Training Applications:

**Patient Transfer/Handling:** Trains for changing occupied beds, changing patients' clothing, positioning in chairs and wheelchairs, transfer from bed to chair, assisting patients to bedside commode, assisted bedpan use, and prepping and positioning a patient for surgery.

**Patient Hygiene:** Trains for bed baths, flossing and brushing teeth, decubitus ulcer care, washing and combing hair, shaving, and fingernail care.

**Other Applications:** Trains for bandaging fingers and toes, administering liquid feedings, catheter insertion, and ostomy care.

**Manikin Features:**

**Head and Hair:** The neck is flexible. The grey hair can be shampooed and combed.

**Nose and Mouth:** Either may be used for stomach tube insertion. Teeth may be flossed and brushed.

**Eyes and Ears:** One ear accepts a hearing aid. Ears can be cleaned with dry cloth or cotton swab. Both eyes may be irrigated with eye drops and are removable.

**Hands and Toes:** Individual fingers and toes make Grandma Chase perfect for bandaging practice.

**Male and Female Genitalia:** Both are provided and held in place with Velcro. Catheterization or a vaginal douche may be simulated without passing fluid. Perineal care may be practiced.

**Joints:** Manikin bends at the elbow, knee, shoulder, and hip.

**Decubitus Ulcer:** A foam decubitus ulcer is included and may be placed anywhere on the manikin to simulate a bed sore.

**Other Features:** Grandma Chase also comes with a tracheostomy, a rectum that accepts rectal thermometers or water enemas, and an ostomy stoma.



## GERI GERIATRIC NURSING MANIKINS

### SPECIFICATIONS

Same great features as the Complete Geri, plus these great heart and lung sounds.

Heart sounds include normal, holosystolic, systolic click, aortic regurgitation, mid systolic, atrial septic defect, mitral stenosis, S3 gallup, PDA, pulmonary stenosis, S4 gallup, and VSD.

Lung sounds include ...



## RESCUE RANDY

### SPECIFICATIONS

Rescue Randy is a rugged, life-size adult manikin designed to simulate victims for emergency training programs. Randy's extra-tough, steel-framed body and flexible major joints can be flexed to fit any rescue scenario.

Rescue Randy is filled with a weighted foam that emulates both the weight and resiliency of a human body.

Ideal for training exercises:

Extrication of victims from vehicles  
Fire-rescue from smoke-filled rooms  
Removal of victims from accidents

Application of anti-shock trousers  
Immobilization/restraint techniques  
Suspended victim scenarios



## CASUALTY SIMULATION KITS

### SPECIFICATIONS

The Deluxe Casualty Simulation Kit contains seven bleeding strap-on wounds and fifteen never before seen moulage stick-on wounds. The full line of accessories allows you to create seventy individual wounds. Wounds include lacerations, fractures, burns, projectile entry, and much more. You can then use the included make up to create realism in your evolutions. The kit comes packaged in a carry case and contains instructions.





## TERRY TRAUMA ADULT TRAUMA & CPR MANIKIN

### SPECIFICATIONS

Complete with burns, lacerations, and broken bones, Terry Trauma offers realistic experience in identification, assessment, treatment, and transport of disaster victims. His flexible joints make him perfect for any kind of rescue, extrication, immobilization, or restraint.

Terry comes with two heads, a rigid rescue head and a second head for sanitary CPR training. He also includes twelve moulage pumps, simulated blood, make up blood, CPR faces, airways and lungs, chest/skin overlay, and clothing.

Use any of the following wounds for a custom disaster scenario:

Sucking chest wound  
Forehead and forearm lacerations  
Broken clavicle with seat belt contusion  
2nd and 3rd degree burns of the face, hand, forearm, chest, and back  
Protruding intestines



Compound fractures  
Jaw wound  
Projectile entry and exit on arm  
Impalement of the lower leg  
Crushed foot

## ADULT ALS TRAINER

### SPECIFICATIONS

The Adult ALS Trainer is a comprehensive, mega-code manikin. It has an airway management trainer for both oral and nasal intubation. Practice airway management procedures for bag valve mask, Combitube™, and LMA. Laryngospasms can also be simulated. All airway landmarks are realistically featured.

When the ALS Trainer is used with a simulator, standard ECG monitoring can be performed, as well as defibrillation, cardioversion, and pacing. The manikin also includes an I.V. injection arm and several I.M. injection sites located on the deltoid and thighs.



## STAT MANIKIN

### SPECIFICATIONS

The STAT Manikin's body demonstrates a giant step forward in manikin design. Joint range of motion is near human. Rib cage motion mimics lifelike respirations. Multiple pulse points demonstrate blood pressure variation.



Twelve pulse points  
Accurate human anatomy  
CPR  
Multiple injection sites  
Advanced I.V. arm  
Oral and nasal intubation

4-lead monitoring  
Tongue swells  
Laryngospasms  
Cricothyrotomy  
Bilateral chest tube placement with simulated fluid discharge

Bilateral pneumothorax relief  
Stomach distention  
I.V. arm therapy  
Defibrillation  
Arrhythmia training

## CRISIS PATIENT MANIKIN

### SPECIFICATIONS

Complete with burns, lacerations, and broken bones, Terry Trauma offers realistic experience in identification, assessment, treatment, and transport of disaster victims. His flexible joints make him perfect for any kind of rescue, extrication, immobilization, or restraint.

Terry comes with two heads, a rigid rescue head and a second head for sanitary CPR training. He also includes twelve moulage pumps, simulated blood, make up blood, CPR faces, airways and lungs, chest/skin overlay, and clothing.



Use any of the following wounds for a custom disaster scenario:

- Sucking chest wound
- Forehead and forearm lacerations
- Broken clavicle with seat belt contusion
- 2nd and 3rd degree burns of the face, hand, forearm, chest, and back
- Protruding intestines

## LEAD ARRHYTHMIA SIMULATOR-12

### SPECIFICATIONS

Stimulate electrical capture with your external pacer. Press simulator capture key to select one of four preset pacing capture levels: 70, 80, 90, or 100 mA. When the pacer current is greater than the selected capture level, paced beats appear on your monitor. Waveforms for pacing include sinus brady (two), 1st degree AV block, 2nd degree type I AV block, 2nd degree type II AV block (with and without PVCs), and 3rd degree AV block.

Simulate cardioversion with your manual, semi-automatic, or automatic defibrillator. Before defib discharge, activate "convert" feature to select another rhythm to run immediately after defib discharge. Waveforms for defibrillator training include V-Fib, V-Tach (high rate and low rate), Torsade, A-Fib, A-Flutter, PSVT, Sinus Tach, Sinus Rhythm, Sinus Rhythm with PVCs, Asystole, and NSR.

Generate realistic 12-lead ECG rhythms. Connect your ECG cable to the simulator's ten ECG snaps. Independent chest lead and limb lead ECG signals create realistic 12-lead ECGs for each rhythm. Generate ST segment and T wave abnormalities, including Anterior MI, Inferior MI, Antero-Septal ST Elevation, Anterior ST Depression, Lateral ST Elevation, and Inferior ST Elevation. LED indicators include pacer pulse detection, defib discharge detection, and low battery.



## PEDIATRIC ALS TRAINER

### SPECIFICATIONS

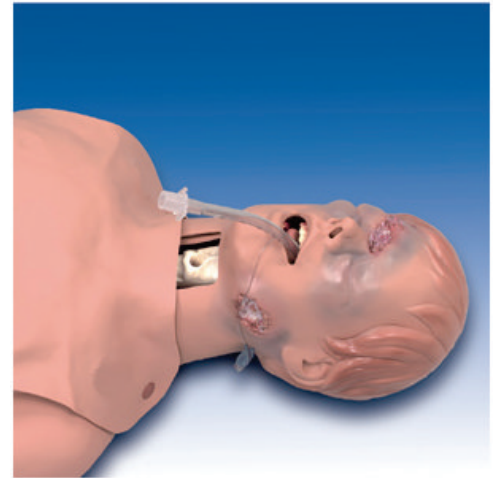
- Bag valve mask ventilation
- Oral and nasal intubation
- Three-lead monitoring - works with most ECG simulators
- Brachial pulse
- External chest compressions
- I.V. arm and hand
- Intraosseous access (both legs)
- Scalp vein for palpation
- Cranial sutures and fontanelles
- NG feeding tube
- Sellick maneuver
- Jaw thrust



## CRITICAL CARE AIRWAY TRAINER

### SPECIFICATIONS

This very difficult intubation head, coupled with the CPR torso, supplies the challenges for initiating respiratory care to the critical patient. By using the features of tongue swelling and laryngospasms, the instructor creates a critical airway management scenario that requires the student to perform a cricothyrotomy. In addition, two external and one internal bleeding wounds demand attention with suctioning and bleeding control. Includes case.



## COMPLETE DEFIB TRAINING PACKAGE

### SPECIFICATIONS

The Complete Defib Training Package combines the flexible arrhythmia/defib training of the AA-550 with the power of a quality defib/intubation manikin.

- Uses seventeen rhythm selections
- Has defibrillation/ECG monitoring and external pacing
- Defibrillation with the ability to auto-convert to a predetermined rhythm
- Works with automatic and manual defibrillators (defibrillator not included)
- Allows for practice of multiple airway management procedures: ET intubation, Combitube, PtL, EOA/EGTA, and bag valve mask
- Contains everything necessary for ACLS, EMT-D, and EMT-B
- Allows for practice of CPR compressions



## AUSCULTATION TRAINING

### SPECIFICATIONS

The Complete Auscultation System includes an Auscultation Trainer with Smartscope™ (AB-2700), an Auscultation Board with Case (AB-2720), a remote control, and an amplifier/speaker system. Coupled with the Auscultation Trainer and Smartscope, the Auscultation Board guides students through the transition from anatomical drawings to a three-dimensional torso. Using the same technology as the Auscultation Trainer, the Auscultation Board will cause the Smartscope to emit various sounds dependent on the location of the stethoscope.





## BLOOD PRESSURE SIMULATOR

### SPECIFICATIONS

- Redesigned and durable control unit
- Simple calibration procedure
- Radial pulses
- Optional external speaker

This lifelike simulator allows the presetting of values for both systolic and diastolic pressures. It provides an excellent means to practice listening to and distinguishing blood pressure sounds prior to actual clinical experience. It is possible to audibly discern the five Korotkoff phases. The electronically generated sounds are digitally recorded.



## CENTRAL LINES CANNULATION SIMULATOR

### SPECIFICATIONS

Designed for ACLS and ATLS testing stations. Landmarks include clavicle, sternal notch, and sternocleidomastoid. Trainer shows muscle and bone section, subclavian, internal jugular, external jugular, and carotid.

- Subclavian vein approaches
- Internal jugular vein approaches
- External jugular vein approaches
- Swan-Ganz catheter insertion



## CHESTER CHEST

### SPECIFICATIONS

The new Advanced Arm has a dual lumen 5FR PICC (Peripherally Inserted Central Catheter) exiting the basilic vein from the inner bicep area, which is currently the preferred placement. The basilic vein is slightly raised for easy identification. Posterior to the PICC insertion site is a recessed area for the placement of a peripheral port (optional port and connector shown, but not included).

The dual PICC, IV catheter, and optional peripheral port are all attached to a simulated blood reservoir bag in the arm to permit the practice of blood withdrawal and fluid infusion. Cleansing, application of dressings and securement devices can be demonstrated all sites.



## D.Q. BITUS™ WOUND CARE SIMULATOR

### SPECIFICATIONS

All four stages of pressure ulcers are displayed, some with the additional complications of undermining, tunneling, sinus tract, slough, infection, and exposed bone. Also displayed are a suspected deep tissue injury, unstageable full eschar/slough wound, and a 5 1/2" dehisced wound. The Stage III and Stage IV are positioned so that a "bridging" dressing for use with a vacuum assisted closure and negative pressure wound therapy devices can be demonstrated and practiced. You are also able to demonstrate and practice wound cleansing, classification, staging, and assessment, as well as the measuring of wound length, depth, undermining, and tunneling.



## PNEUMOTHORAX SIMULATOR

### SPECIFICATIONS

This simulated torso helps emergency personnel learn the life-saving techniques associated with pneumothorax injuries.

Life-size  
Features rib cage, liner, and vinyl skin  
Ideal for PHTLS and EMT-P classes  
Excellent review for ER, OR, or ICU

The self-sealing dual lung may be punctured approximately 75 to 100 times each, allowing double usage from original and replacement lungs. Procedural needle not included



## FEMALE CATHETER SIMULATOR

### SPECIFICATIONS

Simulates the torso of a middle aged woman properly positioned for catheterization. External genitalia and perineum are lifelike, and the labia minora can be spread to reveal the clitoris, urethral opening, and vaginal introitus.

Inside there is a bladder reservoir, urethra, and a simulated urethral sphincter.

Normal resistance and pressure are experienced as the catheter passes through the urethra, past the sphincter, and into the bladder. Fluid then passes through the catheter as on a real patient.

This Female Catheterization Simulator comes with lubricant, catheters, teaching guide, and carrying case.



## ADULT STERNAL INTRAOSSEOUS INFUSION SIMULATOR

### SPECIFICATIONS

The Adult Sternal Intraosseous Infusion Simulator is a first of its kind dramatic training aid designed to demonstrate, simulate, and prepare all levels of health care professionals for use of the sternal intraosseous approach. Created with the consultation of experts that developed this technique. Incredible realism and accurate landmarks will allow students to simulate this new life-saving procedure with skill, confidence, and accuracy. This procedure is a quick and simple alternative to conventional IV infusion. The simulator uses a replaceable bone that is designed to be rotated and punctured several times. The sternum may be filled with simulated blood to better visualize true flashback.



## CHILD CRISIS™ MANIKIN

### SPECIFICATIONS

- Relevant landmarks for CPR compression
- Separate lungs for auscultation
- Realistic mouth, tongue, oral pharynx, larynx, chords, trachea and esophagus; perform nasal and oral intubation
- I.V. training arm with realistic flashback
- Speaker in arm produces BP sounds
- Variable systole and diastole
- Compatible with RhythmSIM and most standard cardiac defibrillators; manual, auto, and semi-automatic
- 4-lead ECG monitoring
- "Quick-look" capability
- Defib up to 360 joules
- Intraosseous infusion
- Femoral access site and femoral pulse



## INTRAOSSEOUS INFUSION SIMULATOR

### SPECIFICATIONS

Intraosseous Infusion Simulator enables students to practice intraosseous infusion with incredible accuracy and realism.

Provides a very accurate and consistent simulation of procedure. Due to the innovative bone design, students can palpate landmarks and puncture each bone. Bones have been designed so all four sides can be punctured multiple times, decreasing multiple replacement costs.





## INFANT CRISIS™ MANIKIN

### SPECIFICATIONS

The most comprehensive PALS trainer available, the Infant CRiSis Manikin is designed for practice of I.V. therapy, umbilical catheterization, airway management, intraosseous infusion, and CPR. Teach infant life saving techniques to individuals and groups. Tactile and visual realism provides students with excellent training.

Manikin includes:  
Airway management trainer head with intubation  
Intraosseous infusion simulator  
I.V. arm / I.V. leg  
Umbilical cannulation chest skin  
Hard carrying case

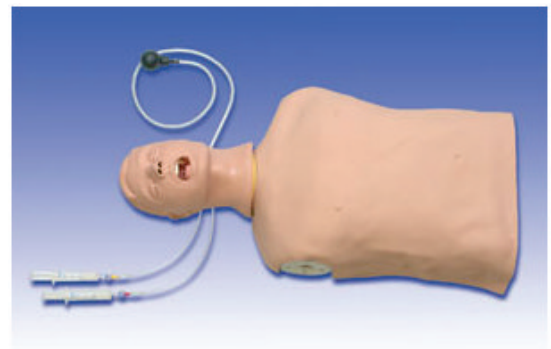


## ADVANCED LARRY INTUBATION TRAINER

### SPECIFICATIONS

Tongue swelling  
Laryngospasms  
More tracheal space for improved maneuvering  
Apply cricoid pressure, change the position of the trachea, and close the esophagus in order to practice the Sellick maneuver

Advanced Larry simulates a non-anesthetized patient for practicing intubation, ventilation, suction, and CPR techniques. Practice oral, nasal, and digital intubation, as well as ET, EOA, PTL, LMA, EGTA, and Combitube insertion. Applying pressure to the cricoid cartilage changes the position of the trachea and closes the esophagus to allow realistic practice of the Sellick maneuver. With its slightly anterior position, swelling tongue, and vocal cords, Advanced Larry is perfect for any level of training.



## CHILD AIRWAY MANAGEMENT TRAINER

### SPECIFICATIONS

This anatomically-correct eight-year-old-child manikin is perfect for practicing pediatric airway management skills, including oral, digital, and nasal intubation and suction. Landmarks include nostrils, teeth, tongue, oral and nasal pharynx, larynx, epiglottis, arytenoids, false and true cords, cricoid ring, tracheal rings, trachea, esophagus, lungs, and stomach.

Equipment sizes:

Laryngoscope blade: #2  
Endotracheal tube: #4 1/2  
Nasotracheal tube: #3 to #3 1/2



## ARMSTRONG ADULT INTUBATION MANIKIN

### SPECIFICATIONS

Head extends for correct positioning, the lungs have a realistic compliance, and the skin is soft.

Practice bag valve mask ventilations, oral or nasal intubation, EOA, Combitube, and other airway management techniques. Works well with curved or straight laryngoscope blades. Comes with realistic cricoid cartilage (for cricoid pressure) and realistic teeth. Laryngospasms can be simulated.

The manikin features oral pharynx, tongue, epiglottis, vocal cords, stomach, trachea, right and left bronchus, esophagus with stomach, articulating jaw, upper and lower teeth, bilateral nasal passages, soft face skin, and laryngospasms.



## LARRY INTUBATION TRAINER

### SPECIFICATIONS

Infant Airway Management Trainer features realistic size and anatomy for practicing airway management skills on an infant.

Equipment sizes:

Laryngoscope blade: #1

Endotracheal tube: #4



## O.B. MANIKINS

### SPECIFICATIONS

A lifelike O.B. manikin for realistic practice in emergency childbirth techniques.

Opaque and transparent overlays  
Vertex, normal, and breech delivery  
Umbilical cords to clamp and cut



## ADVANCED INJECTION ARM

### SPECIFICATIONS

Complete venous access includes basilic, cephalic, accessory cephalic, median cubital, dorsal metacarpal, digital, and more. Blood flows to all injection points simultaneously from a single fluid bag. Soft, flexible fingers, wrist, and skin make for excellent realism.



## ARTERIAL PUNCTURE ARM

### SPECIFICATIONS

Ideal for practice of drawing arterial blood samples at either radial or brachial sites. Plus, the instructor can control pressure to produce a lifelike backflow of blood in the syringe.



## I.V. ARM

### SPECIFICATIONS

Realistic skin rolls as you palpate the vein and the characteristic "pop" can be felt as the needle penetrates the vein. Multiple access points allow practice in drawing blood, subcutaneous and intramuscular injections, I.V. catheter insertions, and infusions.



## I.V. ARM AND HAND

### SPECIFICATIONS

Fully-functional I.V. training arm and hand. The student can palpate the arm and hand, which are made of a supple, resilient, lifelike skin. The vein can be located, the needle introduced, and then blood withdrawn or fluid injected. Simulated blood and carrying tray are included.





## NITA NEWBORN TRAINING AID

### SPECIFICATIONS

Nita Newborn is a 16" female manikin for practicing vascular access in infants and newborns. Permits accessing, securing, dressing, site care, and maintenance for venipuncture, central catheters, PICC lines, and umbilical catheters. Nasal and oral openings allow placement of nasal cannulas, NG tubes, and feeding tubes. Skin rolls as you palpate the vein, and backflow confirms needle location. Self-sealing veins permit withdrawal, infusion, and heparinization. Numerous veins are accessible.



## PEDIATRIC I.V. ARM

### SPECIFICATIONS

Practice venipuncture and intramuscular injection techniques used with children. Soft foam is used to simulate the deltoid muscle. Simulated bone in the shoulder defines and limits the injection area.



## EVA PELVIC EXAM MODEL WITH CASE

### SPECIFICATIONS

Eva can be used for anatomical instruction, abdominal palpation, speculum instruction, or advanced tactile comparisons.

Covered in soft, easy-to-clean vinyl, Eva offers detailed and lifelike features for realistic simulation.

Eva includes nine interchangeable inserts:

- Normal cervix
- Normal parous cervix
- Cervix with endocervical polyp
- Cervix with ectropion characteristics
- Cervix with neoplasia (carcinoma)
- Normal uterus
- Pregnant uterus (ten weeks)
- Two adnexal masses



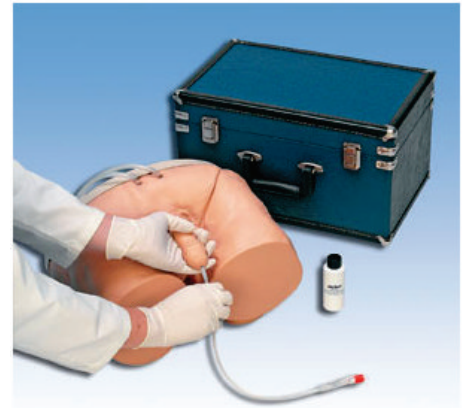
## MALE CATH SIMULATOR

### SPECIFICATIONS

A lubricated catheter can be inserted in the urethral orifice, passed through the urethra, and entered into the bladder. Fluid flows from the catheter when the bladder is successfully entered. The normal restrictions caused by the mucosal folds, the bulbous urethra, and the internal urethral sphincter are present.

The simulator teaches proper positioning and movement of the penis for catheterization with a minimum of patient discomfort.

This Male Catheterization Simulator comes with lubricant, six catheters, teaching guide, and carrying case.



## PETER PICC CENTRAL CATHETER LINE · INSERTION SIMULATOR

### SPECIFICATIONS

The only teaching model which allows the practice of placing peripherally inserted central catheter lines (PICC Lines).

Model features anatomically correct cephalic, basilic, median basilic, jugular, subclavian, and superior vena cava. Model also features movable chin that simulates occlusion of the jugular in order to prevent the PICC line from taking this route.

Standard I.V. catheter placement is also possible with Peter PICC.

Measure proper catheter length using palpable ribs or measure catheter length outside the body. Confirm proper placement by viewing distal tip of catheter in the viewable superior vena cava. Identifying underlying veins below replacement skin.



## INTRAMUSCULAR INJECTION SIMULATOR

### SPECIFICATIONS

The perfect volunteer for training health care students the proper procedure for administering intramuscular injections. One buttock is shown dissected to reveal the major muscles, nerves, and vessels.

The other side offers all the bony landmarks used to identify the desired gluteal injection area, including the superior end of the femur, the posterior and anterior superior iliac spines, and the sacrum. Lateral injections in the thigh can also be demonstrated and practiced.

Skin texture, muscle texture, bone shape, and position all realistically resemble a live patient. Perforation of the tissue with a needle duplicates the feeling of administering an actual injection.

Includes syringes, teaching guide, and a carrying case



## INFANT AIRWAY INTUBATION HEAD

### SPECIFICATIONS

AA-3050 features both realistic size and anatomy for training and practicing airway management skills on an infant. Represents newborn - 1 month old.

Quality and affordability make the AA-3050 an ideal training tool.

Manikin head comes with lubricant and carrying bag.

Equipment sizes:

Laryngoscope blade: #0 / Endotracheal tube: #3

Nasotracheal tube: #2

Features include:

Landmarks: uvula, vocal cords, glottis, epiglottis, larynx, arytenoid cartilage, trachea, esophagus, inflatable lungs, and stomach

Vocal cords, highlighted in white, provide easy laryngoscope viewing



## STAT BABY ADVANCED WITH IPAD®

### SPECIFICATIONS

This affordable patient simulator takes ALS training into the students' environment. Instructors can evaluate student knowledge, skill levels, and critical thinking abilities by utilizing the applications via the iPad®.

This simulator can function in the lab and in the field for ascertaining diagnostic ability. Student performance records can be transferred to a computer, and chronological scenario event logs can be printed.



## INTRADERMAL INJECTION SIMULATOR

### SPECIFICATIONS

Practice intradermal injections safely and conveniently with the Intradermal Injection Simulator.

Unit consists of molded arm section from the wrist to just below the elbow. Vinyl skin provides realistic feel and appearance for successful training experience.

Unit features:

Eight sights for intracutaneous injections

Skin welts which form during proper fluid injection

Reusable practice sights

Injection simulator includes sealant, syringe, teaching guide, and portable storage box.





## 3-YEAR-OLD AIRWAY INTUBATION HEAD

### SPECIFICATIONS

AA-3025 features both realistic size and anatomy for training and practicing airway management skills on a child. Quality and affordability make the AA-3025 indispensable for training.

Manikin head comes with lubricant and carrying bag.

Equipment sizes:

Laryngoscope blade: #2 / Endotracheal tube: #4

Nasotracheal tube: #2 1/2

Features include:

Landmarks: uvula, vocal cords, glottis, epiglottis, larynx, arytenoid cartilage, trachea, esophagus, infatable lungs, and stomach

Vocal cords, highlighted in white, provide easy laryngoscope viewing



## ADULT AIRWAY MANAGEMENT TRAINER WITH CORRECT ANATOMY

### SPECIFICATIONS

This trainer's detailed human anatomy includes the sculpted alveolar sac, bronchial tree, blood vessel structures of the cross-sectioned and exposed flexible lungs, interior main bronchus, and oral/nasal pharyngeal spaces. The complicated airway includes breakout teeth, tongue edema, and laryngospasms. An anatomical stomach that swells with esophageal intubation, or excessive pressure with the BVM during rescue breathing, together with the vomiting capability of this manikin, makes this an exceptional educational tool for multitasking.

Includes instructions, soft carry bag, lubricant, and replaceable lungs and stomach.



## 12-LEAD ECG PLACEMENT TRAINER

### SPECIFICATIONS

A replica of a human thorax, this manikin has all appropriate landmarks necessary to train students in proper placement of ECG leads. Using reusable, color-coded magnets for leads, students learn correct placement as the appropriate LED lights up. A lighted signal also indicates when all leads are placed correctly.

The AA-3400 can be used with a rhythm simulator to enhance training by adding ECG readings that can be viewed on your monitor or printed on your 12-lead ECG machine.



## SUTURE PRACTICE ARM

### SPECIFICATIONS

Lifelike suturing practice on skin, complete with wrinkles, pores, and fingerprints. It is pliable for easy sewing, but sutures will not pull out when tightened. Three wounds are already cut on the arm and more can be made. Includes a starter suturing kit and instructions in a padded box.



## SURGICAL SALLY SURGICAL BANDAGING SIMULATOR

### SPECIFICATIONS

Surgical Sally offers an excellent hands-on opportunity for training in bandaging techniques. Flexible, flesh-colored, vinyl skin responds realistically to adhesives and bandages.

The full-size, forty-year-old female torso sports fourteen surgical wounds.

Includes:

- Thyroidectomy
- Mid-sternal split with chest tube drains
- Mastectomy with simulated drain
- Cholecystectomy with simulated T-tube
- Appendectomy
- Ileostomy
- Abdominal hysterectomy
- Thoracostomy
- Nephrectomy
- Stage Two sacral decubitus ulcer
- Leg amputation stump



## ADVANCED CHILDBIRTH SIMULATOR

### SPECIFICATIONS

Comes with female and male babies with placenta, extra stomach cover, two extra vulval inserts, four extra umbilical cords, and soft carrying case.

A simulator for demonstration of all standard obstetrical procedures:

- Fetal palpation
- Breech and normal birth
- C-section delivery
- Episiotomy
- Vertex presentation
- Prolapse of umbilical cord

This simulator features a removable diaphragm and stomach covers for manual positioning of the fetus. The life-size pelvic cavity includes all major landmarks and an outline of the bony pelvis



## ADVANCED 4-VEIN VENIPUNCTURE ARM PAD

### SPECIFICATIONS

AA-3050 features both realistic size and anatomy for training and practicing airway management skills on an infant. Represents newborn - 1 month old.

Quality and affordability make the AA-3050 an ideal training tool.

Manikin head comes with lubricant and carrying bag.

Equipment sizes:

Laryngoscope blade: #0 / Endotracheal tube: #3

Nasotracheal tube: #2

Features include:

Landmarks: uvula, vocal cords, glottis, epiglottis, larynx, arytenoid cartilage, trachea, esophagus, inflatable lungs, and stomach

Vocal cords, highlighted in white, provide easy laryngoscope viewing



## STAT BABY

### SPECIFICATIONS

Stat Baby brings you the most lifelike simulator for infant care by utilizing new materials for tactile awareness during patient assessment. Developed in conjunction with leading pediatric physician involvement, this baby contains a wide range of skill sets in a simple format that is affordable to all. The infant is sized to a 9-month-old and weighs 18 lbs.

IO leg

Peripheral IV (left hand and foot)

PICC line

ET tube insertion

Laryngeal spasm

LMA insertion

Trach care

NG tube placement with fluid reservoir

Feeding tube care

Rectal medication

Pulses (8 pulse locations - 2 brachial, 2 femoral, 2 pedals, 2 carotid)

Defibrillation

Foley catheter insertion

Chest tube

Pneumothorax



Includes IV vein kit (one arm, one leg), leg skin, arm skin, twelve IO leg bones, four pneumothorax sites, two injection sites, PICC line site, four reservoir bags, defib adapters, ECG interactive simulator, and simulated blood powder.

## INTRAOSSEOUS LEG WITH STAND

### SPECIFICATIONS

Intraosseous access to the proximal tibia is offered with the I/O Leg Adult STAT Simulator. Use the I/O Leg to enhance training and understanding of procedures associated with B.I.G.™ and EZ-IO™ devices. This I/O device is not fluid capable and no blood source is accessible through the injection site.





## SMART STAT BASIC WITH IPAD®

### SPECIFICATIONS

This affordable patient simulator takes ALS training into the students' environment. Instructors can evaluate student knowledge, skill levels, and critical thinking abilities by utilizing the applications via the iPad®.

This simulator can function in the lab and in the field for ascertaining diagnostic ability. Student performance records can be transferred to a computer, and chronological scenario event logs can be printed.

SMART STAT Basic has an on-board air compressor, a free app on the App Store, storage for students' performances, spontaneous breathing, pulses, blood pressure, carotid and femoral pulses, normal and emergent heart and lung sounds, 12 pulse points synchronized with the heart, EKG interpretation and cardiac treatment, IV catheterization and infusion, tension pneumothorax treatment, chest tube insertion with simulated drainage, and advanced difficult airway maintenance.

SMART STAT Basic includes an iPad®, USB cable, blood pressure cuff, hard case, shorts, and replacement parts.

New deluxe airway management head

Tongue edema

Laryngospasm

Cricothyrotomy

Breakout teeth

Designed for LT, ET, LMA, and Combitube.

4-lead recognition of 17 rhythms, defibrillation and auto conversion, variable rates, and pacing.

BP arm that independently varies systolic and diastolic pressures, changes Korotkoff sound, and varies the amplitude of sound.

IV arm with full venous access from dorsal hand to upper arm.

Infuse, withdraw, titrate drug therapy, sharps control, securing, and IM injection

Bilateral chest decompression.

Bilateral chest tube insertion.

12 pulse point locations in pairs: carotid, femoral, popliteal, pedal (dorsal arch), radial, brachial (IV arm, antecubital, BP arm biceps pressure point).

Distal pulses drop off under 70 mmHg systolic.

Virtual capnography and oximetry with printable chronological student session reports.



## FORCEPS OB DELIVERY MANIKIN

### SPECIFICATIONS

Anatomically correct pelvic model with premature and full term fetuses for practicing forceps and vacuum assist delivery. Includes simulated blood powder, an extra vulva, and a soft carrying bag. Pregnant belly overlay and transparent overlay can be added to this manikin.

Realistic practice of delivery techniques (forceps, vacuum assist).

Lifelike pelvic cavity.

Removable abdominal overlay.

Soft skin vulva (anatomically correct).

Two infant fetuses (premature and full term with fontanel and cranial sutures).





## **THERAPY EQUIPMENT COMFORT RANGE**



### **THE UNIVERSAL ANALGESIC SYSTEM FOR USE WITH "ENTONOX" GAS**

**SUITABLE FOR USE IN ALL SITUATIONS  
WHERE PAIN RELIEF IS REQUIRED**

- **AMBULANCE/EMERGENCY SERVICES**
- **MATERNITY/HOSPITAL AND COMMUNITY**
- **OTHER HOSPITAL AREAS**

## **COMFORT REGULATOR**

- The regulator has been designed especially for use with Entonox Gas
- The regulator and yoke are colour coded to ensure that it can only be used with Entonox Gas
- The regulator is fitted with an" Entonox "Schrader Valve for easy connection to the Demand Valve
- The regulator is part of the range of Therapy Equipment' Mediregs' which have been designed as specific Medical Regulators .It has a plastic" wipe-clean "surface
- The regulator carries a four year function warranty

## **GAS SCAVENGING**

- All connections in the system are 30mm and compatible with the British Standard requirements on Gas Scavenging systems

## **ADVANTAGES OF THE COMFORT RANGE**

### *Analgesic Demand Valve*

- The Demand Valve has been designed to take into account all of the requirements of BS4272:Part 2:1996
- It can be used for prolonged periods without any danger of gas freezing
- It is lightweight
- It can be autoclaved ,complete with hose) silicone type(
- It can be used with either a single patient use facemask ,or single patient use mouthpiece
- The gas is exhausted away from the patient through the handle ,which has a 30mm Gas Scavenging connection as per the requirements of BS737-2:1998) 22mm tubing should not be used for Gas Scavenging(
- It has a wrist strap for patient comfort
- It can be fitted with either a Polymer Hose to BS739:1998 or a Silicone Hose ,which is more flexible and entirely suitable for use but does not meet the pull and occlusion test of BS739:1998
- It is colour coded Blue and White as per BS739:1998
- It can be used with either a Regulator or Gas outlet
- It carries a three year warranty
- It requires strip down maintenance every 3 years which can be either carried out at Therapy Equipment or in a hospital workshop





Part Number 6000) Polymer Hose(  
Part Number 6002) Silicone Hose(



Part Number 6005) Polymer Hose(  
Part Number 6007) Silicone Hose(



Part Number 6010



Facemask Part Number 6815) Large (  
6816 (Medium)  
Mouthpiece Part Number 6061



## TECHNICAL DATA

- The Demand Valve is manufactured in Polysulphone
- Regulator - Plastic surrounded brass
- Output Pressure range of regulator 40-75 psi  
)Dependant on contents within cylinder(
- Demand Valve operation  
Low Range - @ 2<sup>1</sup>/<sub>2</sub>cmH<sub>2</sub>O - 10 LPM Flow  
Max Flow - 200 LPM
- Flush Button - 200 LPM
- Demand Valve Diaphragm - Silicone
- Demand Valve Exhaust Valve - Silicone
- Standard Length of Hose - 2 Metres (can be increased on request)
- Weight - 0.54KG

## PART NUMBERS

|  |               |
|--|---------------|
| Demand Valve with Polymer Hose -                               | 6005          |
| Demand Valve with Silicone Hose -                              | 6007          |
| )Each Demand Valve is supplied with a facemask and mouthpiece( |               |
| Pin Index Regulator & Schrader -                               | 6010          |
| Complete Comfort Range kit with Polymer Hose -                 | 6000          |
| • Pin Index Regulator & Schrader                               |               |
| • Demand Valve with 2 Metres of Polymer Hose/Probe             |               |
| • Facemask   |               |
| • 5 x Mouthpiece   |               |
| Complete Comfort Range kit with Silicone Hose -                | 6002          |
| • Pin Index Regulator & Schrader                               |               |
| • Demand Valve with 2 Metres of Silicone Hose/Probe            |               |
| • Facemask   |               |
| • 5 x Mouthpiece   |               |
| 30mm AGSS System -   | 6020          |
| Wrist Strap -  | 6005-33       |
| Facemask -   | Large- 6815   |
|  | Medium - 6816 |
| Mouthpiece -   | 6061          |

Full list of Spares prices are available on request

## THE THERAPY EQUIPMENT LTD

UNIT 1 ,CRANBOURNE AVENUE  
CRANBOURNE INDUSTRIAL ESTATE  
POTTERS BAR ,HERTS .EN6 3JN

TEL: 01707 652270 FAX: 01707 652622

E-mail :sales@therapiequipment.co.uk  
Website :www.therapiequipment.co.uk



0086

FM 37970



# DRÖP

**LAVAGGIO OCULARE D'EMERGENZA  
EYE WASH STATION LAVE OÛIL D'URGENCE**

**AUGENSPULSTATION LAVADO OCULAR D'EMERGENCIA**

**DRÖP** contiene il necessario per un efficace primo lavaggio oculare d'emergenza.

**DRÖP** è in materiale termoformato con coperchio trasparente. È applicabile a parete e viene fornito corredato di viti con tasselli.

**DRÖP** contains the necessary items for an efficient First Emergency eye wash.  
**DRÖP** is thermo-formed, has a transparent lid. Can be easily wall-mounted with screws and plugs, supplied in the kit.

**DRÖP** contient le nécessaire pour un efficace premier lavage d'urgence des yeux. **DRÖP** est thermoformé avec un couvercle transparent. Facilement applicable au mur par vis et chevilles, fournis avec le Kit.

**DRÖP** enthält die notwendigen Einzelteile für eine leistungsfähige erste Auge spülung. **DRÖP** hat einen Klarsichtdeckel warmgeformt. Kann mit den Schrauben und den Steckern an der Wand eichtbefestigt werden (Mitgeliefert im Installationsatz).

**DRÖP** contiene lo necesario por un eficaz primer lavado ocular d'emergencia. **DRÖP** está hecho de material termomoldeado con tapa transparente. Es colgable a la pared y es provisto equipado de vides y tacos.

#### Contenuto:

- 2 Flaconi di soluzione salina sterile da ml 500
- 2 Doccette oculari integrate
- 1 Specchietto

#### Contents:

- 2 Sterile Saline Solution of 500 ml
- 2 Integrated Eye cups
- 1 Mirror

#### Inhalt:

- 2 Augenspülflaschen mit 500 ml Natriumchloridlösung (0,9%)
- 2 Ergonomisch geformte Augenschale mit integrierten Dusche
- 1 Spiegel

#### Contenu:

- 2 Flacons de solution saline stérile de 500 ml
- 2 Bouchons avec lave oeil intégré
- 1 Miroir

#### Contenido:

- 2 Frascos de solución salina estéril de ml 500
- 2 Tapones oculares integrados
- 1 Espejo

#### Modalità di utilizzo:

Per aprire **DRÖP** è sufficiente tirare leggermente il coperchio lasciandolo cadere verso il basso. Estrarre il flacone e ruotare il tappo. In questo modo si rompe il sigillo ed il flacone è pronto all'uso. Il tappo anatomico consente di dirigere in modo preciso il getto ottenendo un efficace lavaggio oculare senza sprechi. A fine intervento, lo specchietto montato nella stazione può essere un utile accessorio per fare una prima valutazione dei danni.

#### Instructions:

To open **DRÖP** pull lightly the transparent lid and let it fall downward. Take out one of the bottles, twist the Eye Cup cap, the security seal will break enabling you to use the solution. The anatomic Eye Cup allows to direct the solution jet correctly, obtaining an efficient eye wash without any waste. After washing your Eye, the mirror can be useful to find out the eventual damages occurred.

#### Mode d'usage:

Pour accéder aux flacons, il est nécessaire de pousser légèrement le couvercle du **DRÖP** vers le bas et le laisser tomber. Extraire le flacon et en tournant le bouchon le cachet se déchire. Le flacon est prêt pour l'utilisation. Le bouchon anatomique permet de diriger le flux de la solution sans perte vers l'œil en question. Après l'intervention, le petit miroir qui est en dotation permet de faire une première estimation des dégâts subits.

#### Gebrauchsanweisung:

Um **DRÖP** zu öffnen drücken Sie denn Deckel leicht nach unten und lässt ihm herunter fallen. Nehmen Sie eine der Flaschen heraus, durch das drehen von die Auge Schale bricht die Sicherheit von die Flasche und gibt die Möglichkeit die Lösung zu benutzen. Die anatomische Auge Schale Erlaub es die Lösung Strahl richtig zu verweisen ohne irgend eine Vergeudung. Nach das Waschen Ihren Auges, kann der Spiegel nützlich sein die Beschädigungen herauszufinden.

#### Modalidad de empleo:

Para abrir **DRÖP** es suficiente tirar lgeramente la tapa dejándolo caer hacia abajo. Extraer el frasco y girar el tapón. De este modo se rompe el sello y el frasco está listo al empleo. El tapón anatómico permite dirigir de modo preciso el chorro consiguiendo un eficaz lavado ocular sin derroches. A fin intervención, el espejo montado en la estación puede ser un útil accesorio para hacer una primera valoración de los daños.





# DROP



- ① Specchietto
- ② Doccetta oculare
- ③ Flacone soluzione oculare
- ④ Istruzioni d'uso
- ⑤ Parte frontale



- ① Mirror
- ② Eye cup
- ③ Sterile saline solution
- ④ Instructions
- ⑤ Crystal lid



- ① Miroir
- ② Bouchon oculaire
- ③ Solution saline stérile
- ④ Mode d'emploi
- ⑤ Couvercle



- ① Kleine Spiegel
- ② Auge Schale
- ③ Natriumchloridlösung
- ④ Gebrauchsanweisung
- ⑤ Deckel



- ① Espejo
- ② Tapon ocular
- ③ Solucion estéril salina
- ④ Instrucciones
- ⑤ Tapa



codice /code: **CPS202**

Peso/Weight/Poids/Gewicht/Peso: **Kg 1,5**

Dimensioni/Sizes/Dimensions/Dimension/Dimensiones:  
**mm 410 x 320 x 75**

MADE IN ITALY



info@pvs-spa.it [www.pvs-spa.it](http://www.pvs-spa.it)

# Workplace First Aid Kit



## SHELF-STYLE FACTORY KIT **FS-055**

This shelf-style factory kit is a good kit for first aid. You can customize the shelves in the box to enable you to put the first aid contents properly and freely. The user can lock the first aid box and enable the authorized persons only to use this kit. This first aid kit is suggested for industrial, companies, shopping center, hotel, lab, etc.

### **FS-055 Contents:** Total 260 pcs

|    |                           |                                |
|----|---------------------------|--------------------------------|
| 01 | SoapSachets               | 10 pcs                         |
| 02 | Alcohol Pad               | 10 pcs                         |
| 03 | Cleansing Wipes           | 10 pcs                         |
| 04 | Pure Water Wipe           | 10 pcs                         |
| 05 | Adhesive Plaster          | 140 pcs                        |
| 06 | Conforming Bandage        | 3 rolls                        |
| 07 | Elastic Bandage           | 2 rolls                        |
| 08 | Sterile Eye Pad           | 5 pkts                         |
| 09 | Sterile Gauze Pad, Large  | 10 pkts                        |
| 10 | Sterile Gauze Pad, Medium | 10 pkts                        |
| 11 | Sterile Gauze Pad, Small  | 10 pkts                        |
| 12 | Safety Pins               | 10 pcs                         |
| 13 | Triangular Bandage        | 2 pcs                          |
| 14 | Scissors                  | 1pair                          |
| 15 | Tweezers                  | 2 pair                         |
| 16 | Safety Gloves             | 4pair                          |
| 17 | Emergency Blanket         | 1pc                            |
| 18 | Wound Dressing            | 2 pcs                          |
| 19 | Larger Wound Dressing     | 1 pcs                          |
| 20 | Burn Sheet                | 2 pcs                          |
| 21 | ABD Pad                   | 3 pcs                          |
| 22 | Ice Bag                   | 2 pcs                          |
| 23 | CPR Mask                  | 1 pc                           |
| 24 | Adhesive Tape             | 3 rolls                        |
| 25 | Cotton Ball               | 3 pkts                         |
| 26 | Kidney Dish               | 1 pc                           |
| 27 | Clinical Thermometer      | 1 pc                           |
| 28 | Instruction Manual        | 1 pc                           |
| 29 | ABS Box With Lock         | 1 pc                           |
|    |                           | (Size: 39 x 30 x 16cm)         |
|    |                           | ( 15 3/8" x 11 3/4" x 6 1/4" ) |

**10 to 20 persons**



## MEDICAL FIRST-AID RESPONSE KIT **FS-054**

Complete First-Aid resources for car or construction, this kit provides vital aid and immediate first aid and preparation for accidents and injuries most anywhere, this kit contains essential treatment aids, instruments. And the essential first aid materials needed to respond to nearly minor first aid situations. Unique tackle-box style carrying case.

### **FS-054 Contents:** Total 93 pcs

|    |                                   |                         |
|----|-----------------------------------|-------------------------|
| 01 | Adhesive Tape                     | 2 rolls                 |
| 02 | Elastic Gauze Bandage 5 x 450cm   | 2 rolls                 |
| 03 | Elastic Gauze Bandage 7.5 x 450cm | 2 rolls                 |
| 04 | Sterile Sponge(10 x 10cm)         | 3 pcs                   |
| 05 | Sterile Gauze (7.5 x 7.5cm)       | 3 pcs                   |
| 06 | Sterile Gauze (5 x 5cm)           | 3 pcs                   |
| 07 | Cotton Wool Pack                  | 3 pkts                  |
| 08 | Safety Pins                       | 6 pcs                   |
| 09 | Scissors                          | 1 pair                  |
| 10 | Sterile Tweezers                  | 1 pair                  |
| 11 | Gloves                            | 5 pairs                 |
| 12 | Adhesive Plasters                 | 25 pcs                  |
| 13 | Knuckle Adhesive Plasters         | 4 pcs                   |
| 14 | Butterfly Adhesive Plasters       | 4 pcs                   |
| 15 | Hemostatic Lancet                 | 2 pcs                   |
| 16 | Adhesive Dressing, 10x 6 cm       | 8 pcs                   |
| 17 | SoapSachet                        | 5 pcs                   |
| 18 | Cleansing Wipe                    | 5 pcs                   |
| 19 | Wet Tissue                        | 5 pcs                   |
| 20 | Instant Ice pack                  | 2 pcs                   |
| 21 | Triangular BandageTNT             | 1 pc                    |
| 22 | Clinical Thermometer              | 1 pc                    |
| 23 | Plastic Box ( 36 x 21 x 15cm)     | 1 pc                    |
|    |                                   | ( 14 " x 8 1/4" x 6 " ) |

**8 to 10 persons**



# Workplace First Aid Kit



**FS-050 Contents:** Total 93 pcs

|                                      |         |
|--------------------------------------|---------|
| 01 Adhesive Tape                     | 2 rolls |
| 02 Elastic Gauze Bandage 5 x 450cm   | 2 rolls |
| 03 Elastic Gauze Bandage 7.5 x 450cm | 2 rolls |
| 04 Sterile Sponge (10 x 10cm)        | 3 pcs   |
| 05 Sterile Gauze (7.5 x 7.5cm)       | 3 pcs   |
| 06 Sterile Gauze (5 x 5cm)           | 3 pcs   |
| 07 Cotton Wool Pack                  | 3 pkts  |
| 08 Safety Pins                       | 6 pcs   |
| 09 Scissors                          | 1 pair  |
| 10 Sterile Tweezers                  | 1 pair  |
| 11 Gloves                            | 5 pairs |
| 12 Adhesive Plasters                 | 25 pcs  |
| 13 Knuckle Adhesive Plasters         | 4 pcs   |
| 14 Butterfly Adhesive Plasters       | 4 pcs   |
| 15 Hemostatic Lancet                 | 2 pcs   |
| 16 Adhesive Dressing, 10 x 6 cm      | 8 pcs   |
| 17 Soap Sachet                       | 5 pcs   |
| 18 Cleansing Wipe                    | 5 pcs   |
| 14 Wet Tissue                        | 5 pcs   |
| 20 Instant Ice pack                  | 2 pcs   |
| 21 Triangular Bandage TNT            | 1 pc    |
| 22 Clinical Thermometer              | 1 pc    |
| 23 Metal Box ( 28 x 23 x 9cm)        | 1 pc    |
| ( 11 " x 9 " x 3 1/2" )              |         |

**FACTORY FIRST AID KIT FS-050** 0123

Metal wall cabinet enamelled with epoxy powder in white, three compartments, recommend for companies up to 8~10 people, suggested for business company, small factory, building yard, workshops labs, etc.

**8 to 10 persons**



**FS-051 Contents:** Total 208 pcs

|                                      |         |
|--------------------------------------|---------|
| 01 Surgical Tape                     | 3 rolls |
| 02 Soap Sachet                       | 10 pcs  |
| 03 Cleansing Wipe                    | 20 pcs  |
| 04 Antiseptic Tissue                 | 10 pcs  |
| 05 Elastic Gauze Bandage 5 x 450cm   | 4 rolls |
| 06 Elastic Gauze Bandage 7.5 x 450cm | 2 rolls |
| 07 Wound Dressing 10 x 10cm          | 10 pcs  |
| 08 Sterile Gauze (7.5 x 7.5cm)       | 20 pcs  |
| 09 Cotton Wool Pack                  | 4 pkts  |
| 10 Safety Pins                       | 10 pcs  |
| 11 Scissors                          | 1 pair  |
| 12 Tweezers                          | 2 pairs |
| 13 Gloves                            | 5 pairs |
| 14 Triangular bandage                | 2 pcs   |
| 15 Adhesive Plasters                 | 100 pcs |
| 16 Disposable Sterile Scalpel        | 1 pc    |
| 17 Haemostatic lancet                | 2 pcs   |
| 18 Clinical thermometer              | 1 pc    |
| 19 Plastic Kidney Dish With Tray     | 1 pc    |
| 20 Metal Box ( 38 x 30 x 10cm)       | 1 pc    |
| ( 15 " x 11 3/4 " x 3 7/8" )         |         |

**INDUSTRY FIRST AID KIT FS-051** 0123

White metal wall cabinet enamelled by epoxy powder. 3 compartments, recommend for companies up to 15~20 people, suggested for industrial companies, shopping center, hotel, lab, etc.

**15 to 20 persons**



## FIRST RESPONDER

**FS-095**



**5 to 10 persons**

Airtight and watertight kit made of thick polypropylene resin. The container's special characteristics permit to be used in all extreme conditions. Filled for emergency. Highly recommended for the boat, Sea Platform, Mountain fire brigade, etc.

**FS-095 FIRST RESPONDER, Packed in Strong Box**

**FS-095BA FIRST RESPONDER, Packed in Nylon Bag.** Made of an extremely resistant material, with great capacity, there are 4 large external pockets and internal compartments, supply reflective strips. size 45 x 31 x 31 cm.





# Workplace First Aid Kit



## FS-095, FS-095BA Contents:

Total: 200pcs

|                            |         |   |         |
|----------------------------|---------|---|---------|
| 01 Hand Suction Pump       | 1 pc    | 22 Povidone-Iodine Prep Pad   | 10 pcs  |
| 02 Resuscitator Bag        | 1 pc    | 23 Antiseptic towelette   | 5 pcs   |
| 03 E-Mask                  | 1 pc    | 24 Wet tissue (Soap)  | 5 pcs   |
| 04 Guedel Airway           | 2 pcs   | 25 Hammer   | 1 pc    |
| 05 Clinical Thermometer    | 1 pc    | 26 Adhesive Tape  | 3 pcs   |
| 06 Mouth Opener            | 1 pc    | 27 Sterile Eye Pad  | 5 pcs   |
| 07 Disposable Syringe      | 2 pcs   | 28 Triangular Bandages TNT  | 2 pcs   |
| 08 Tongue Forceps          | 1 pc    | 29 Sterile Gauze Pad  | 10 pcs  |
| 09 Sterile Scalpel         | 1 pc    | 30 Cotton Ball  | 5 pkts  |
| 10 Lancet                  | 2 pcs   | 31 Adhesive Strip   | 50 pcs  |
| 11 Wooden Tongue Depressor | 5 pcs   | 32 Cotton Applicator  | 20 pcs  |
| 12 Surgical Scissors       | 1 pair  | 33 Elastic Bandage, 6cm   | 3 rolls |
| 13 Dressing Tweezers       | 1 pair  | 34 Compressive Pad Bandages, medium   | 2 rolls |
| 14 Safety Pins             | 10 pcs  | 35 Compressive Pad Bandages, max  | 1 roll  |
| 15 Sterile Latex Gloves    | 2 pairs | 36 Elastic Crepe Bandage, 2"  | 2 rolls |
| 16 Sphygmomanometer        | 1 pc    | 37 Elastic Crepe Bandage, 4"  | 2 rolls |
| 17 Stethoscope             | 1 pc    | 38 Emergency Gold Blanket   | 2 pcs   |
| 18 Boston                  | 1 pc    | 39 Diagnostic Penlight  | 1 pc    |
| 19 Tourniquets             | 1 pc    | 40 Disposable Wastage Bags  | 3 pcs   |
| 20 Ice Bag                 | 2 pcs   | 41 Strong Box, Polypropylene<br>(Size: 46.5 x 36 x 18 cm)<br>(18 1/4" x 14 1/8" x 7 1/8") | 1 pc    |



## Wall Bracket & Office First Aid Kit



| FS-018 Contents:                | Total 72 pcs |
|---------------------------------|--------------|
| 01 Adhesive Tape                | 1 roll       |
| 02 Elastic Bandage 5 x 450cm    | 2 rolls      |
| 03 Elastic Bandage 7.5 x 450cm  | 2 rolls      |
| 04 Adhesive Plasters            | 25 pcs       |
| 05 Sterile Gauze (7.5 x 7.5cm)  | 5 pcs        |
| 06 Sterile Gauze (5 x 5cm)      | 5 pcs        |
| 07 Soap Sachet                  | 3 pcs        |
| 08 Cleansing Wipe               | 3 pcs        |
| 09 Alcohol Wipe                 | 4 pcs        |
| 10 Antiseptic Wipe              | 3 pcs        |
| 11 Safety Pins                  | 6 pcs        |
| 12 Gloves                       | 2 pairs      |
| 13 Scissors                     | 1 pair       |
| 14 Sterile Tweezers             | 1 pair       |
| 15 Cotton Wool Pack             | 4 pkts       |
| 16 Adhesive Dressing, 10 x 6 cm | 1 pkt        |
| 17 Hemostatic Lancet            | 2 pcs        |
| 18 Triangular Bandage           | 1 pc         |
| 19 Compress Bandage 8 x 10cm    | 1 roll       |
| 20 ABS Box                      | 1 pc         |
| (Size: 28.5 x 19.5 x 11.7cm)    |              |
| ( 11 1/4" x 7 5/8" x 4 5/8" )   |              |

### OFFICE FIRST AID KIT FS-018 CE 0123

Made of strong tripolymer plastic (ABS) which is shiny smooth and easy to clean, a neoprene seal is fitted to make them dust proof, a wall bracket secures them on any house wall or booth, a better contents settlement is permitted by the internal crystal partition, the closing security is given by two swivel catches. Contents ideal for a six-person company. Suggested for business companies, small factories, workshops, labs, etc.

6 to 8 persons



| FS-019 Contents:                   | Total 88 pcs |
|------------------------------------|--------------|
| 01 Mouth To Mouth Resuscitator     | 1 pc         |
| 02 Adhesive Plaster                | 2 rolls      |
| 03 Elastic Gauze Bandage 6 x 400cm | 2 rolls      |
| 04 Elastic Gauze Bandage 8 x 400cm | 2 rolls      |
| 05 Cotton Wool Pack                | 5 pks        |
| 06 Soap Sachets                    | 3 pcs        |
| 07 Cleansing Wipes                 | 3 pcs        |
| 08 Antiseptic Wips                 | 3 pcs        |
| 09 Safety Pins                     | 12 pcs       |
| 10 Scissors Lister                 | 1 pair       |
| 11 Tweezers                        | 1 pair       |
| 12 Disposable Sterile Scalpel      | 1 pc         |
| 13 Hemostatic Lancet               | 2 pcs        |
| 14 Adhesive Plasters               | 25 pcs       |
| 15 Sterile Gauze Pad               | 5 pcs        |
| 16 Triangular bandage TNT          | 2 pcs        |
| 17 Gloves                          | 4 pairs      |
| 18 Instant Ice Pack                | 1 pc         |
| 19 Iso thermic Blanket             | 1 pc         |
| 20 Compress Pad Bandage, 8 x 10cm  | 2 rolls      |
| 21 Compress Pad Bandage, 10 x 12cm | 2 rolls      |
| 22 Adhesive Dressing, 10 x 6 cm    | 8 pcs        |
| 23 ABS Box (28.5 x 19.5 x 11.7cm)  | 1 pc         |
| ( 11 1/4" x 7 5/8" x 4 5/8" )      |              |

### OLYMPIA FIRST AID KIT FS-019 CE 0123

Made of strong tripolymer plastic (ABS) which is shiny smooth and easy to clean, a neoprene seal is fitted to make them dust proof, a wall bracket secures them on any house wall or booth, a better contents settlement is permitted by the internal crystal partition, the closing security is given by two swivel catches. Contents ideal for fireman sport, forest anger, personal paramedic etc.

8 to 10 persons



# Wall Bracket & Office First Aid Kit



| <b>FS-035 Contents:</b>       |                        | Total 81 pcs |
|-------------------------------|------------------------|--------------|
| 01                            | Adhesive Tape          | 2 rolls      |
| 02                            | Gauze Bandage          | 2 pcs        |
| 03                            | Gauze Bandage, medium  | 2 pcs        |
| 04                            | Sterile Gauze          | 10 pkts      |
| 05                            | Cotton Wool            | 5 pkts       |
| 06                            | Safety Pins            | 10 pcs       |
| 07                            | Scissors Lister        | 1 pair       |
| 08                            | Adhesive Plasters      | 25 pcs       |
| 09                            | Antiseptic Wipe        | 3 pcs        |
| 10                            | Lancet                 | 1 pc         |
| 11                            | Gauze Pad              | 3 pkts       |
| 12                            | Gloves                 | 4 pairs      |
| 13                            | Triangular Bandage TNT | 1 pc         |
| 14                            | Tweezers               | 1 pair       |
| 15                            | Adhesive Dressing      | 8 pcs        |
| 16                            | Soap Sachet            | 3 pcs        |
| 17                            | First Aid Booklet      | 1 pc         |
| 18                            | ABS Box                | 1 pc         |
| (Size: 31.5x21.5x12.5cm)      |                        |              |
| ( 12 3/8" x 8 1/2" x 4 7/8" ) |                        |              |

## SPORT PLUS KIT FS-035



10 to 12 persons

Made of strong ABS plastic which is shiny smooth and easy to clean. A neoprene seal is fitted to make them dustproof. A wall bracket secures them on any house wall or booth. A better contents settlement is permitted by the internal crystal partitions. The closing security is given by two swivel catches. Suggested for business companies, small factories, labs, etc.



| <b>FS-036 Contents:</b>       |                           | Total 105 pcs |
|-------------------------------|---------------------------|---------------|
| 01                            | Emergency Blanket         | 1 pc          |
| 02                            | Triangular Bandage        | 2 pcs         |
| 03                            | Conforming Bandage        | 2 pcs         |
| 04                            | Adhesive Bandage          | 50 pcs        |
| 05                            | Wound Plaster Kit         | 1 pkt         |
| 06                            | Transparent Tape          | 2 pcs         |
| 07                            | POP Bandage               | 2 pcs         |
| 08                            | Gauze Roll                | 2 rolls       |
| 09                            | Non-adherent Pad          | 3 pcs         |
| 10                            | First Aid Dressing        | 2 pcs         |
| 11                            | Rayon Ball                | 3 pcs         |
| 12                            | Non-woven Fabric Strip    | 1 pkt         |
| 13                            | Gloves                    | 4 pairs       |
| 14                            | First Aid Dressing        | 2 pcs         |
| 15                            | Elastic Strap Tourniquets | 1 pc          |
| 16                            | Thick PBT Bandage         | 2 pcs         |
| 17                            | Sterile Gauze Swab        | 10 pkts       |
| 18                            | Sterile Gauze Swab.M      | 5 pkts        |
| 19                            | Scissors                  | 1 pair        |
| 20                            | Metal Forceps             | 1 pair        |
| 21                            | Safety Pins               | 10 pcs        |
| 22                            | First Aid Booklet         | 1 pc          |
| 23                            | ABS Box                   | 1 pc          |
| (Size: 31.5x21.5x12.5cm)      |                           |               |
| ( 12 3/8" x 8 1/2" x 4 7/8" ) |                           |               |

## FIRST AID DIRECT FS-036



10 to 12 persons

Made of strong ABS plastic which is shiny smooth and easy to clean. A neoprene seal is fitted to make them dustproof. The closing security is given by two swivel catches. Suggested for business companies, small factories, labs, etc.

# FOR MEDICAL GASES/CALIBRATION GASES/SPECILITY GASES



| For Medical Gases/Calibration Gases/Speciality Gases |                                  |                         |        |        |                                 |     |                |      |                    |       |
|--|----------------------------------|-------------------------|--------|--------|---------------------------------|-----|----------------|------|--------------------|-------|
| Serial No.   | Approx. Water Capacity in Litres | Approx. Gas Capacity in |        |        | Diameter dia. in                |     | Approx. Length |      | Approx. Net weight |       |
|  |                                  | C.F.L.                  | C.M.R. | Litres | Inch                            | mm  | Inch           | mm   | Lbs                | Kgs   |
| AD-75  | 0.5                              | 3.5                     | 0.70   | 75     | 2.50                            | 65  | 9.0            | 245  | 1.2                | 0.545 |
| AD-150   | 1                                | 5.1                     | 0.75   | 150    | 3.5                             | 80  | 10.2           | 260  | 2.8                | 1.1   |
| AD-270   | 1.8                              | 9.5                     | 0.27   | 270    | 4.40                            | 104 | 12.4           | 315  | 4.8                | 2.1   |
| AD-330   | 2.3                              | 10.6                    | 0.33   | 330    | 4.45                            | 114 | 14             | 355  | 5.5                | 2.5   |
| AD-495   | 3.3                              | 18.1                    | 0.495  | 495    | 4.45                            | 114 | 18.5           | 470  | 7.5                | 3.4   |
| AD-615   | 4.1                              | 21.7                    | 0.615  | 615    | 4.45                            | 114 | 24.5           | 620  | 9.2                | 4.1   |
| AD-681   | 4.5                              | 24                      | 0.675  | 675    | 4.45                            | 114 | 24.8           | 630  | 10.1               | 4.5   |
| AD-1170  | 7.8                              | 41.32                   | 1.17   | 1170   | 5.51                            | 140 | 28.7           | 730  | 17.8               | 8.1   |
| AD-1375  | 9.1                              | 48.5                    | 1.375  | 1375   | 5.51                            | 140 | 34             | 865  | 21.2               | 9.5   |
| AD-1580  | 10                               | 53                      | 1.5    | 1580   | 5.90                            | 150 | 38.7           | 980  | 23.7               | 10.7  |
| AD-1580-1  | 10                               | 53                      | 1.5    | 1580   | 6.35                            | 160 | 37.5           | 950  | 24.2               | 11    |
| <b>Working Pressure 150 Bar</b>                      |                                  |                         |        |        | <b>Testing Pressure 250 Bar</b> |     |                |      |                    |       |
| AD-3080  | 20                               | 106                     | 3      | 3080   | 7.89                            | 200 | 35.01          | 890  | 41.67              | 18.9  |
| AD-3185  | 21.3                             | 111.6                   | 3.2    | 3185   | 7.89                            | 200 | 37.47          | 942  | 43.87              | 19.9  |
| 14   | 40                               | 212                     | 6      | 6080   | 9.11                            | 230 | 52.75          | 1340 | 80.74              | 36.6  |
| <b>Working Pressure 200 Bar</b>                      |                                  |                         |        |        | <b>Testing Pressure 350 Bar</b> |     |                |      |                    |       |
| 15   | 30                               | 167                     | 2      | 3080   | 6.90                            | 170 | 25.28          | 642  | 26.00              | 12.1  |
| 16   | 20                               | 111.6                   | 4      | 6080   | 9.11                            | 200 | 28.19          | 711  | 36.32              | 16    |
| 17   | 40                               | 222.2                   | 8      | 6080   | 9.11                            | 232 | 53.74          | 1365 | 57.23              | 26.1  |
| 18   | 60                               | 333.4                   | 12     | 10080  | 9.94                            | 250 | 59.17          | 1502 | 121.82             | 54.9  |

Every cylinder is Produced from high strength Aluminium alloy and are manufactured in accordance with BS EN 1375: 2003 / IS 15938 Standards

Only inspected and Certified by TÜV India and approved by Chief Controller Of Explosives, Bangalore



# FIRE Extiguisher



| For Fire Extiguisher |                 |                   |     |        |             |
|----------------------|-----------------|-------------------|-----|--------|-------------|
| Serial No            | Gas Capacity In | Water Capacity In | OD  | Length | Tare Weight |
| Liters               | Kg              | Liters            | mm  | mm     | Kg          |
| 1                    | 1               | 1.8               | 114 | 315    | 2.3         |
| 2                    | 2               | 3.1               | 114 | 470    | 3.4         |
| 3                    | 3               | 4.5               | 114 | 630    | 4.7         |
| 4                    | 4.5             | 6.8               | 140 | 760    | 7.1         |
| 5                    | 5               | 7.5               | 140 | 840    | 7.8         |
| 6                    | 6.8             | 10                | 140 | 960    | 10.2        |

Every cylinder is Produced from high strength Aluminium alloy and are manufactured in accordance with BS EN 1375: 2003 / IS 15968 Standards

Duly inspected and Certified by TÜV India and approved by Chief Controller Of Explosives, Nagpur

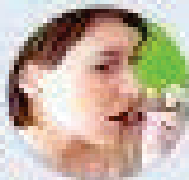


# PORTABLE EMERGENCY OXYGEN KIT

AMBULANCE



ASTHMA



HOSPITAL



MOUNTAIN



POLLUTION



INDUSTRIAL



SPORTS



OFFICE  
(Fatigue-stress)



| Water Cap. | Gas Capacity |      |                 | Outside Dia. |     | Length |     | Tare Weight |     |
|------------|--------------|------|-----------------|--------------|-----|--------|-----|-------------|-----|
|            | Liters       | C.F. | Cm <sup>3</sup> | Inch         | mm  | Inch   | mm  | Lbs         | Kg  |
| 1.8        | 6.5          | 637  | 170             | 4.49         | 114 | 17.4   | 275 | 4.8         | 2.2 |
| 3.2        | 11.6         | 935  | 300             | 4.49         | 114 | 14     | 355 | 5.5         | 2.5 |
| 3.1        | 16.1         | 1405 | 465             | 4.49         | 114 | 18.5   | 470 | 7.5         | 3.4 |
| 4.5        | 21           | 1925 | 625             | 4.49         | 114 | 24.8   | 610 | 10.2        | 4.7 |



Every cylinder is Produced from high strength Aluminium alloy and are manufactured in accordance with BS EN 1075 : 2000 / IS 15660 Standards

Duly Inspected and Certified by TÜV India and approved by Chief Controller Of Explosives, Nagpur





# Saver One®

everywhere for life

Sudden Cardiac Arrest can happen anytime, anywhere and without warning. The person affected has only few precious minutes left for a chance of survival.

## ***YOUR FIRST AID COULD BE SOMEBODY'S LAST CHANCE***

SAVER ONE AEDs are designed for a public access use and licensed to administer fast and safe rescues. Highly-effective and user-friendly for any lay rescuer, even without minimal training.

SAVER ONE Semi and Fully Automatic defibrillators are two dependable members of our AED family. The Fully Automatic administers a defibrillating shock (when appropriate) with no shock button for the user to press while the Semi-Automatic administers a shock at the press of a button.

Choose the best portable AED that's right for you to save lives everywhere in any public circumstance (home, office, school, hotel, airport, train, beach, gym, pool, disco, etc.) and before EMS team arrives.

**Automated testing** to vouch daily functionality

A **new look** complete with all pictograms which light up necessary to guide rescuers step by step

More alternatives for recording and transfer data  
**internal memory**, removable **card**, **USB**

Slight yet solid with **long-lasting battery options** to ensure the best portability in any circumstance

Biphasic technology **up to 360J energy**

**Unique features** combined with available configurations give rise to exclusive devices

*Meet AHA/ERC 2010 Guidelines*



## **SEMI-AUTOMATIC** **two buttons**

# Saver One®

**Maintenance-Free:** Automatically performs daily, monthly and six-month extensive self-checks of all main components: battery, internal electronics, energy charge and disarm, shock and ECG calibration systems. Daily testing data are stored by the device as text file (named AED1LOG) easily readable by any computer. AED runs further tests after each battery insertion as well as every time the device is turned on. A visual cue (green/red status indicator) provides effective alert to users whether AED is in working order and ready for a rescue.

**Helpful Text Screen:** The mini LCD screen always displays a battery gauge with its residual percentage charge and runs text in tandem with audible voice instructions, helpful in noisy and chaotic environments.

**Synergic "INFO" Button:** The *i* button provides valuable device or battery technical information to users and is serviceable for changing the language.

**CPR Coaching:** More instructive voice and text prompts guide user through rescue. A built-in metronome assist responder during the CPR, providing audio cues for the appropriate number and rate of chest compressions.

**Adult / Child Capability:** Can be used on patients of any age with flashing icons on the keyboard providing information on the pads in use. Device senses when Pediatric pads are installed and adjusts to use a more appropriate lower energy level (50J)



## DEFIBRILLATOR

|                  |   |
|------------------|---|
| Operation:       | Semi-Automatic Version<br>Fully Automatic Version   |
| Energies:        | Standard max 200J or Power max 360J   |
| Waveform:        | Adaptive BTE (biphasic truncated exponential) conforming to patient chest's impedance   |
| Energy type:     | Escalating from 50 to 360J  |
| Protocols:       | Various adult shock protocols available on request  |
| Factory default: | Adult Standard escalating 150, 200, 200J<br>Adult Power escalating 200, 250, 360J<br>Pediatric (Standard or Power) 50J fixed  |
| Charging time:   | ≤ 9 seconds with a new and fully charged battery.<br>Depleted battery will result in a longer charging time   |
| Analysis time:   | EN 60601, from 4 to 15 seconds  |
| Impedance:       | 20-200 ohms   |
| Sensitivity:     | EN 60602-2-4 (AHADB, MITDB source), 97%   |
| Specificity:     | EN 60602-2-4 (AHADB, MITDB source), 99%   |
| Controls:        | 2 buttons for Semi-Automatic: ON/OFF switch, Shock<br>1 button for Fully Automatic: ON/OFF switch   |
| Flashing Icons:  | "pads" warning on pads (not/not well connected)<br>"adult/child" informing on pads type in use<br>"don't touch patient" warning to stay clear<br>"touch patient" informing it's safe to touch |
| Indicators:      | Status LED indicator informing on device condition<br>Battery gauge with remaining capacity rate<br>Audible alerts and text display with service alarms                                       |
| Upgradeable:     | Can be upgraded in the field through a USB cable or a removable card whenever protocols change  |

## BATTERY OPTIONS

|                  |   |
|------------------|---|
| Type:            | Li-SOCI2 Disposable, code SAV-C0903   |
| Autonomy:        | 300 complete rescue cycles (shocks at 200J and CPR) or 200 complete rescue cycles (shocks at 360J and CPR) or 35 hours ECG Monitoring for a new and fully charged battery (*) |
| Shelf-Life:      | 8 years when stored in its original packaging (*)   |
| Standby-Life:    | 5 years once installed to AED, assuming one battery insertion test and daily self-tests but without switching AED on (*)  |
| Type:            | Li-Ion Accumulator (rechargeable), code SAV-C0011   |
| Recharging time: | 2,5 hours with the charger station code SAV-C0014 (*)   |
| Autonomy:        | 250 shocks at 200J or 150 shocks at 360J or 21 hours in ECG Monitoring for a new fully charged battery (*)  |
| Shelf-Life:      | 2,5 years or 300 charging cycles (*)  |

## PADS OPTIONS

|               |   |
|---------------|---|
| Type:         | Disposable, pre-gelled and self-adhesive  |
| Adult:        | Preconnected code SAV-C0846, for patient >8 years or >25Kg<br>81 cm <sup>2</sup> conductive surface |
| Pediatric:    | Code SAV-C0016 for patient from 1 to 8 years old or <25Kg<br>31 cm <sup>2</sup> conductive surface  |
| Cable length: | 120 cm  |
| Shelf-Life:   | 30 months   |

## EVENT RECORDING

|                  |   |
|------------------|---|
| Internal memory: | 1Gbit (128 MB)  |
| Memory capacity: | 6 hours of audio, ECG and event   |
| Optional memory: | Removable SD card. Length of storage depends on card capacity: a 2GB card records up to 100 hours |
| Data recording:  | "AED1LOG" text file with detailed self-test activity<br>"AEDFILES" with complete recorded events  |
| Event review:    | "Saver View Express" data management software   |

## PHYSICAL

|         |  |
|---------|--|
| Size:   | 26,5 x 21,5 x 7,5 cm   |
| Weight: | 1,95 kg with disposable battery<br>2,10 kg with rechargeable battery |

## ENVIRONMENTAL

|                                |   |
|--------------------------------|---|
| Operating temperature:         | 0° C to 55° C   |
| Storing/Shipping temperature:  | -35° C to 60° C (without battery)   |
| Humidity:                      | 0% to 95% relative humidity non-condensing  |
| Sealing (IP Protection):       | IEC 60529 class IP54; slash proof, dust protected                                       |
| Shock/Drop Abuse Endurance:    | IEC/EN 60601-1 clause 21; 1 meter drop, impact, force, rough handling, mobile tolerance |
| Electrostatic Discharge:       | EN 61000-4-2  |
| Electromagnetic Compatibility: | EN 60601-1-2; Emission, Immunity  |
| Electrical Protection:         | EN 60601-1 class I type BF  |
| EC Directive:                  | Class IIb   |

(\*) Temperature at 20° C

## MODEL NUMBERS

|                 |   |
|-----------------|---|
| Code SVO-B0001: | Semi-Automatic Standard Version at 200J |
| Code SVO-B0002: | Semi-Automatic Power Version at 360J    |

|                 |  |
|-----------------|--|
| Code SVO-B0847: | Fully Automatic Standard Version at 200J |
| Code SVO-B0848: | Fully Automatic Power Version at 360J    |

## CONFIGURATION OPTIONS (Box Contents)

|            |   |
|------------|---|
| Conf-Norm: | Standard Basic Configuration<br>(adult pads, disposable battery, carrying case)         |
| Conf-Rech: | Rechargeable Configuration<br>(adult pads, accumulator, charger station, carrying case) |



**FULLY AUTOMATIC**  
**one button**

**6 YEARS**  
WARRANTY

Manufactured in Italy



IMQ mark for  
Safety & Quality



0051



# Saver One D<sup>®</sup>

the AED goes beyond

SAVER ONE D is a rugged, small and lightweight AED with ECG Monitoring capability. Totally reliable for trained users featuring advanced capacities to help improve lifesaving outcomes.

## ***THE RIGHT CHOICE FOR HARSH, OUTDOOR OR MOBILE USE***

While in AED mode, it allows the user to view the ECG and everything needed to know about the patient and ongoing rescue treatment on a very large (12x8 cm) full-color interactive display. Additionally the SAVER ONE D can be switched in a ECG Monitoring mode, to allow for watch over the rhythm and heart rate while using defibrillation pads or standard ECG electrodes connected to a separate cable.

Practical and flexible with Advanced PBLS feature enabling healthcare providers to use the 15:2 CV ratio when performing a Pediatric Basic Life Support, as required by Guidelines if more than one rescuer with a duty to respond.

**Great graphical interface** in tandem with instructive voice prompts to guide rescuers

Functionality ensured by **automatic daily self-test**

Slight yet solid with **long-lasting battery options** to ensure the best portability in any circumstance

More alternatives for recording and transfer data **internal memory**, removable **card**, **USB**, and **IrDA Port** optional with Print Configuration

Biphasic technology **up to 360J energy**

**Unique features** combined with available configurations give rise to exclusive devices

*Meet AHA/ERC 2010 Guidelines*



**AED  
ECG Monitoring**

# Saver One D<sup>®</sup>

**Maintenance-Free:** Automatically performs daily, monthly and six-month extensive self-checks of all main components: battery, internal electronics, energy charge and disarm, shock and ECG calibration systems. Daily testing data are stored by the device as text file (named AED1LOG) easily readable by any computer.

AED runs further tests after each battery insertion as well as every time the device is turned on. A visual cue (green/red status indicator) provides effective alert to users whether AED is in working order and ready for a rescue.

**Service Mini-Screen:** In standby the mini LCD screen displays a check mark confirming AED is ready for use and a battery gauge informing about the residual charge. Will run error codes in faulty conditions.

**Helpful Menu:** 3 buttons for navigating the software menu to set up device at user leisure: adjust the local date or time, adapt the screen or volume to ambient lights and noises, exclude the microphone while recording events, select a different language, print out the ECG files or simply get information on device and battery.

**CPR Coaching:** More instructive voice and text prompts guide user through rescue. A built-in metronome assist responder during the CPR providing audio cues for the appropriate number and rate of chest compressions.

**Adult / Child Capability:** Can be used on patients of any age with Adult or Pediatric proper electrodes. Device senses when Pediatric pads are installed and automatically adjusts to use a more appropriate lower energy level (50J).



## DEFIBRILLATOR

|                  |   |
|------------------|---|
| Operation:       | AED Semi-Automatic<br>ECG Monitoring capability   |
| Energies:        | Standard max 200J or Power max 360J   |
| Waveform:        | Adaptive BTE (biphasic truncated exponential) conforming to patient chest's impedance   |
| Energy type:     | Escalating from 50 to 360J  |
| Protocols:       | Various adult shock protocols available on request  |
| Factory default: | Adult Standard escalating 150, 200, 200J<br>Adult Power escalating 200, 250, 360J<br>Pediatric (Standard or Power) 50J fixed                            |
| Charging time:   | ≤9 seconds with a new and fully charged battery.<br>Depleted battery will result in a longer charging time  |
| Analysis time:   | EN 60601, from 4 to 15 seconds  |
| Impedance:       | 20-200 ohms   |
| Sensitivity:     | EN 60602-2-4 (AHADB, MITDB source), 97%   |
| Specificity:     | EN 60602-2-4 (AHADB, MITDB source), 99%   |
| Controls:        | ON/OFF, Shock button, 3 touch to surf the Menu  |
| Indicators:      | Status LED indicator informing on device condition<br>Battery gauge with remaining capacity rate<br>Audible alerts and text display with service alarms |
| Upgradeable:     | Can be upgraded in the field through a USB cable or a removable card whenever protocols change  |

## ECG MONITORING

|              |  |
|--------------|--|
| Operation:   | Through defibrillation pads or standard ECG electrodes attached to a separate 2-Lead patient monitoring reusable cable SAV-C0017 |
| ECG Size:    | Automatic gain controlled by the display   |
| Heart Rate:  | 30-300 bpm   |
| Sweep Speed: | 25 mm/sec  |

## BATTERY OPTIONS

|               |   |
|---------------|---|
| Type:         | Li-SOCI2 Disposable, code SAV-C0903   |
| Autonomy:     | 250 complete rescue cycles (shocks at 200J and CPR) or 160 complete rescue cycles (shocks at 360J and CPR) or 24 hours ECG Monitoring for a new and fully charged battery (*) |
| Shelf-Life:   | 8 years when stored in its original packaging (*)   |
| Standby-Life: | 5 years once installed to AED, assuming one battery insertion test and daily self-tests but without switching AED on (*)  |

|                  |  |
|------------------|--|
| Type:            | Li-Ion Accumulator (rechargeable), code SAV-C0011  |
| Recharging time: | 2,5 hours with the charger station code SAV-C0014 (*)  |
| Autonomy:        | 200 shocks at 200J or 110 shocks at 360J or 14 hours in ECG Monitoring for a new fully charged battery (*) |
| Shelf-Life:      | 2,5 years or 300 charging cycles (*)   |

## PADS OPTIONS

|               |  |
|---------------|--|
| Type:         | Disposable, pre-gelled and self-adhesive   |
| Adult:        | Preconnected code SAV-C0846 for patient >8 years or >25Kg<br>81 cm <sup>2</sup> conductive surface |
| Pediatric:    | Code SAV-C0016 for patient from 1 to 8 years old or <25Kg<br>31 cm <sup>2</sup> conductive surface |
| Cable length: | 120 cm   |
| Shelf-Life:   | 30 months  |

## EVENT RECORDING

|                  |   |
|------------------|---|
| Internal memory: | 1Gbit (128 MB)  |
| Memory capacity: | 6 hours of audio, ECG and event   |
| Optional memory: | Removable SD card. Length of storage depends on card capacity: a 2GB card records up to 100 hours |
| Data recording:  | "AED1LOG" text file with detailed self-test activity<br>"AEDFILES" with complete recorded events  |
| Event review:    | "Saver View Express" data management software   |

## PHYSICAL

|         |  |
|---------|--|
| Size:   | 26,5 x 21,5 x 7,5 cm   |
| Weight: | 2,30 kg with disposable battery<br>2,45 kg with rechargeable battery |

## ENVIRONMENTAL

|                                |   |
|--------------------------------|---|
| Operating temperature:         | 0° C to 55° C   |
| Storing/Shipping temperature:  | -35° C to 60° C (without battery)   |
| Humidity:                      | 0% to 95% relative humidity non-condensing  |
| Sealing (IP Protection):       | IEC 60529 class IP54; slash proof, dust protected                                       |
| Shock/Drop Abuse Endurance:    | IEC/EN 60601-1 clause 21; 1 meter drop, impact, force, rough handling, mobile tolerance |
| Electrostatic Discharge:       | EN 61000-4-2  |
| Electromagnetic Compatibility: | EN 60601-1-2; Emission, Immunity  |
| Electrical Protection:         | EN 60601-1 class I type BF / CF   |
| EC Directive:                  | Class IIb   |

(\*) Temperature at 20° C

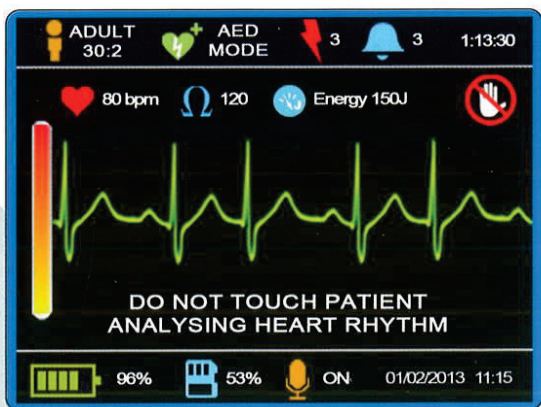
## MODEL NUMBERS

|                 |  |
|-----------------|--|
| Code SVD-B0004: | Standard Version with maximum energy at 200J |
| Code SVD-B0005: | Power Version with maximum energy at 360J    |

## CONFIGURATION OPTIONS (Box Contents)

|                  |  |
|------------------|--|
| Conf-Norm:       | Standard Basic Configuration<br>(adult pads, disposable battery, carrying case)  |
| Conf-Rech:       | Rechargeable Configuration<br>(adult pads, accumulator, charger station, carrying case)  |
| Conf-Print:      | Print Ready Configuration<br>(adult pads, disposable battery, carrying case, IrDA port and thermal printer)                          |
| Conf-Rech/Print: | Rechargeable & Print Ready Configuration<br>(adult pads, accumulator, charger station, carrying case, IrDA port and thermal printer) |

**5.7" TFT Color Display**  
the most detailed and comprehensive screen provides valuable information to rescuers running text and interactive graphics in tandem with voice messages

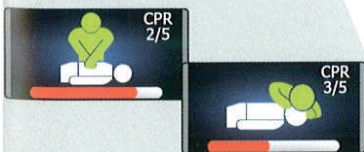


### ABOUT DEVICE:

a **battery gauge** with residual capacity  
the indicator of **available memory** for recording  
a notice if the **microphone** is active or OFF  
the local **date and time**

### ABOUT RESCUE:

the adult or child **protocol in use**  
the **modality in use** (AED or ECG)  
the **fibrillation and shock counts**  
the elapsed **rescue time**  
the **heart rate** (bpm)  
the **impedance** (ohms)  
the **ECG waveform**  
a **touch/not touch** pictogram  
a **charging bar graph** if device charges  
the **energy level** to be delivered (joule)  
a **CPR bar graph** as countdown  
a **CPR cycles count**



**6 YEARS**  
WARRANTY

Manufactured in Italy



IMQ mark for  
Safety & Quality

